



# Mid-America Woodcarvers Association

## Newsletter

May 2017

### Club Officers

#### **President**

Ken Armsbury 402-397-8776  
402-651-6850

#### **1<sup>st</sup> Vice President**

Rohn Collins 402-553-6721

#### **2<sup>nd</sup> Vice President**

Tom Paskach 402-321-4784

#### **Treasurer**

Ken Kult 402-598-7518

#### **Secretary**

Judy Nygard 402-292-8369

### Board Members

Steve Reed 402-293-3847

Paul King 402-991-2737

Deb Russell 402-291-2080

Roger Nadrchal 402-750-5591

Cathy Reed 402-293-3847

### Committee Chairs

#### **Membership**

Ken Kult

#### **Workshops**

Larry Putnam/Deb Russell

#### **Library**

Judy Nygard/Barb Steiner

#### **Website**

Rohn Collins

#### **Hospitality/History**

Sandy Foral

#### **Tool Manager**

Ken Armsbury

#### **Doane**

Rohn Collins

#### **Fall Show**

Tom Paskach

#### **Newsletter**

Judy Nygard

[jnygard@cox.net](mailto:jnygard@cox.net)

## A message from your President,

Here I am, back again with news and encouragement for all the special members of MAWA. As time passes and work is done and more is planned, our club is moving forward to improve activities and programs which will hopefully involve more and more members with the aim of achieving the goals and objectives of our club. What is this goal? As stated in our articles of incorporation; "To promote the appreciation and art of woodcarving and associated crafts through instruction, exhibitions and demonstrations." (and have lots of fun doing this) My challenge to you is; what can we do to achieve this goal? What can you do to assist this effort?

The Saturday workshops are beginning to blossom once more. Dean Paulsen is teaching a patriotic bear in May. Rich Wagner continues to offer instruction in the art of chip carving.

A spoon class is slated for the near future. Gary Klinger will be on hand to assist newcomers in discovering carving skills. I will continue offering tips and techniques in the carving of realistic faces. What forms of carving or subjects would you like to see presented? What skills and talents would you be willing to offer to our members? Dive in, the water is great, and the rewards are too.

The board is pursuing the idea of hosting weekend seminars with known carving instructors. Consider becoming a part of one of these events. What subjects are you interested in and would you be willing to participate? Let us know.

Plans continue to develop for a club picnic. The target date is sometime in September. Planning is also in the works for a Christmas dinner and ornament exchange.

Doane is getting closer and closer. Enrollment continues to come in. Are you contemplating attending? Come and join us for one of the most enjoyable weeks of the year.

Remember, our club is only as good as the active involvement of our members. Come and join us and invite a friend. As the slogan goes; "and the coffee is always on", and there are donuts too.

Ken Armsbury

### **Meetings:**

**First & Third Saturdays of each month 9am - 1pm**  
**Augustana Lutheran Church 38th & Lafayette St., Omaha NE**

For more club information go to our websites:

[www.midamericawoodcarvers.com](http://www.midamericawoodcarvers.com)

[www.thedoaneexperience.com](http://www.thedoaneexperience.com)

# CLUB NEWS

## DOANE ALERT

**CLASSES ARE FILLING FAST. IF YOU HAVEN'T SENT YOUR REGISTRATION IN.....HURRY!**

If you are having trouble with your registration or still need the information, email me at [jnygard@cox.net](mailto:jnygard@cox.net) or call. You can call any of the board members if you have questions. (phone numbers on page 1)



Ken Jirele won our quarterly award. He chose the \$25 gift certificate from The Woodcraft Shop.

What did he have to do to win? All he had to do was attend our Omaha Saturday club meeting and sign in. Easy? Maybe you could be our next quarterly winner.

Meeting minutes: Feb. and March Board meetings.

Treasurer's report: Ken Kult

The board approved sending \$400 to the awards for International Woodcarving Congress to be used for the Youth award and one of the top three awards. Budget for 2017 was submitted and approved. Insurance bill came in for the next three years. Credit card charges are higher than anticipated, currently looking into PayPal as an option.

Doane report: Rohn Collins

Some classes have filled up. Contract from Doane has been received.

Fall Show Report: Tom Paskach

Discussions are ongoing about judging, prize money and Saturday night dinner. Discussions about other art organizations and other clubs that may want to join our Fall Show. Woodworkers Guild was mentioned.

Discussed other types of advertising, get on TV websites, Omaha World Herald community calendar, Morning Blend or other type of media coverage.

Discussed upcoming events. Picnic: Cathy Reed. Christmas Party: Deb Russell

Rohn Collins will check into the possibility of grant money.

## NEW MEMBERS

We would like to send out a **warm welcome** to new and returning members to our club.

Joe Marshall

Nashua, NH

Gary Borgstadt

River Falls, WI

Gary Wilkins

Freemont, OH

Mark Glick

Ft. Meyers, FL

Patrick Capecci

Omaha, NE

## A moment of silence.....

As we welcome new members to our club, we must also at times acknowledge the passing of a dear member. Ron Holland passed away April 13, 2017. He was a long time member of the club and a friend to many. Farewell, Ron. We will miss you.

## Members Show 'n Share



Vince Corrado



Glen Fischer



Tom Spoonhour



Dean Paulsen  
Bear will be May 6  
& May 20th Class

## Class in Progress:

Faces by Ken Armsbury and Thad Tinder



Plate and stand  
Larry Gruit

### **Western & Wildlife Art Workshop**

July 15-21, 2017 Doane University, Crete, NE

Contact Nancy Burke [ww12618@windstream.net](mailto:ww12618@windstream.net)

[www.westernwoodcarvers.com](http://www.westernwoodcarvers.com)

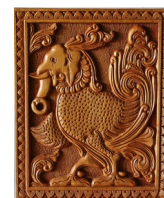


### **MAWA Woodcarving Experience at Doane**

July 23 - 29 Doane University, Crete NE

Contact Rohn Collins [midamericawoodcarvers@midamericawoodcarvers.com](mailto:midamericawoodcarvers@midamericawoodcarvers.com)

[Www.thedoaneexperience.com](http://www.thedoaneexperience.com)



## MAWA 2017 Club Calendar

<b>May 6 - Club Meeting</b>	4th of July Bear Class (part 1) by Dean Paulsen Chip Carving - Rich Wagner
<b>May 6 - 7</b>	North Arkansas Woodcarver's Club Show and Sale For more info: <a href="http://www.northarkansaswoodcarvers.org">www.northarkansaswoodcarvers.org</a>
<b>May 20 - Club Meeting</b>	Board Meeting 4th of July Bear Class (part 2) by Dean Paulsen
<b>June 3 - Club Meeting</b>	Open Carving Faces class continued by Ken Armsbury
<b>June 10 - 18</b>	51st International Woodcarvers Congress, Maquoketa, IA For more info: <a href="http://www.awcltd.org">www.awcltd.org</a>
<b>June 17 - Club Meeting</b>	Sharpening Demo and Techniques by Ken Jirele Chip Carving - Rich Wagner
<b>June 23 - 25</b>	Wahpeton Carving Weekend, Wahpeton, ND For more info: <a href="http://www.rrvwc.org">www.rrvwc.org</a>

This calendar is subject to change, information will be updated as needed. If you know of an upcoming carving event please let us know so we can include it on our calendar.

### CLASS INFO



**Rich Wagner** will be available at most meetings to assist with **Chip Carving**. If you are working on a chip carving project and would like some guidance, bring it in or if you want to learn the basics, just look for the table with the Chip Carving sign. Also, Rich will be bringing basswood items to the meetings that you may purchase for your projects such as plates, crosses and plaques. (Assortment may vary.)

If you are a beginner and are eager to learn, **Gary Klinger** will be available at most meetings to guide you through carving basics. Just ask for Gary and we will get you set up.

### FOR SALE:

Dust Collector DC725, Brand new, in box. \$200.

For more information call Larry Putnam @ (712) 328-8013



### SO MANY QUESTIONS: (Watch for new questions each month)

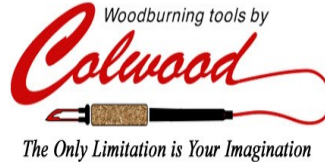
Why do they sterilize the needle for lethal injections? And why do you have to "put your two cents in"...but it's only a "penny for your thoughts"...where's that extra penny going to anyway?



# 2017 MAWA Woodcarving Experience

## @ Doane Sponsors

Click on logos to go to their website



Donated by Colwood



We will add more sponsors as the donations are received.

MEMBERSHIP APPLICATION  
MID-AMERICA WOODCARVERS ASSOCIATION, INC.  
P.O. BOX 540314, OMAHA, NE 68114

Complete this form and return it with your payment to the address above. (\$20)

NAME: \_\_\_\_\_

ADDRESS: \_\_\_\_\_

CITY: \_\_\_\_\_ STATE: \_\_\_\_\_ ZIP CODE: \_\_\_\_\_

PHONE NUMBER: \_\_\_\_\_

Email address: \_\_\_\_\_

If you would like a membership card please include a self-addressed and stamped envelope with your application.





## MID-AMERICA WOODCARVERS ASSOCIATION, INC.

P.O. Box 540314

Omaha, Nebraska 68154

ADDRESS SERVICE REQUESTED

### **The Woodcraft Shop**

The only name you need to know for all your  
woodcarving supply needs  
2724 State Street  
Bettendorf, Iowa 52722

**1-800-397-2278**

[www.thewoodcraftshop.com](http://www.thewoodcraftshop.com)

### **Moore Roughouts**

For the Professional, amateur,  
and everyone in between  
P.O. Box 193 Kindred, ND 58051-9557

**1-800-8BLANKS**

[www.roughouts.com](http://www.roughouts.com)

### **Kreyling's Creation**

For all your pyrography needs  
Complete line of Optima burners  
Cheryl Dow books Italian Poplar Plywood

**(314) 954-4322**

**Email :**

[kreylings\\_creations@yahoo.com](mailto:kreylings_creations@yahoo.com)

### **Woodcraft of Omaha**

14605 Wright Street  
Omaha, NE

**(402) 330-5444**

<https://woodcraft.com>

### **Loess Hills Sawmill**

Custom Sawmilling Lumber Sales  
Custom Furniture  
Northern Basswood and Butternut  
Walnut, Cherry, Red and White Oak Lumber

**(712) 310-4154**

[www.loesshillssawmill.com](http://www.loesshillssawmill.com)

[Email: loesshillssawmill@hotmail.com](mailto:loesshillssawmill@hotmail.com)

### **Woodcarvings by Klingers**

Specializing in Fish Carvings  
Sales and Instruction

***Gary and Mary Ann Klinger***

**(402) 453-2393**

[www.woodcarvingsbyklingers.com](http://www.woodcarvingsbyklingers.com)